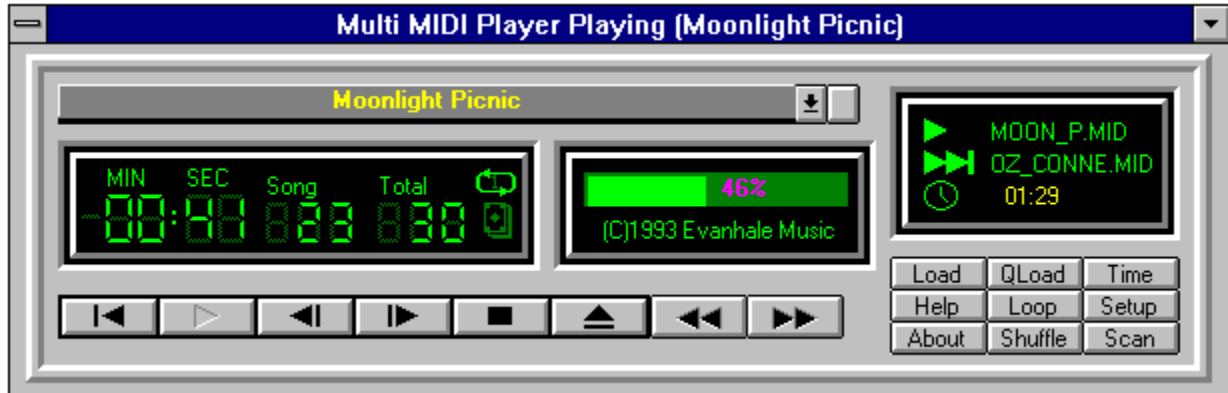


Multi MIDI Player Main Display

Click on any part of the display that you would like to know more about!



See Also:

[Load Dialog Box](#)

[Setup Dialog Box](#)

Time Button

Click the TIME button to change time mode: Time Remaining or Time Elapsed. If time elapsed is selected, a minus sign will show next the time display, indicating the current time mode.

About Button

Click the About button to load the About Dialog Box, where you can find out about the current version and the authors of this program.

Quick Load Button

Click the QLOAD button to load only one MIDI to the playlist. This is faster than using the Load command, but the midis' markers cant be viewed while selecting the file.

Play Button

Click the PLAY button to start playing the current selected MIDI in the playlist.

Jump To Start Button

Click the Jump To Start button to rewind the current MIDI to the beginning.

Previous Button

Click the PREVIOUS button to move to the previous MIDI in the playlist, if more than one MIDI is in the playlist. This button can be clicked while in Stop or Play mode.

Next Button

Click the NEXT button to move to the next MIDI in the playlist, if more than one MIDI is in the playlist. This button can be clicked while in Stop or Play mode.

Stop Button

Click the STOP button to stop the current MIDI from playing. Clicking play again will continue from the same point in which the MIDI stopped.

Eject Button

Click the EJECT button to quit Multi MIDI Player.


Load Button

Click the Load button to load MIDI files to the playlist. See the [Load Dialog Box](#) for more information.

Loop Button

Click the Loop button to toggle between three modes:

Loop Whole Play List 

Loop Current MIDI 

Loop None 

The current loop mode icon will appear next to the Total Songs in Playlist display.

Fast Forward Button

Press the Fast Forward button to move forward quickly in the current played MIDI. Hold the button and watch the time display and the percentage bar changing quickly. Release the button when youve reached the wanted position.

Fast Backward Button

Press the Fast Backward button to move backward quickly in the current played MIDI. Hold the button and watch the time display and the percentage bar changing quickly. Release the button when youve reached the wanted position.

MIDI Marker/Filename display

The MIDI Marker/FileNameName Display shows the current MIDI's Marker or, if the MIDI doesn't have one, it'll show the MIDI's file name. If the Show Path button is pushed, the MIDI's full path and filename will be displayed, regardless if the MIDI has a marker or not.

Clicking the arrow at the right of the display will let you choose which MIDI to play.

Show Path Button

Click this button to toggle between Show Path to Show Marker/Filename modes. If the Show Path button is pushed, the MIDI's full path and filename will be displayed, regardless if the MIDI has a marker or not

Select MIDI Button

Click this button to open a combo box (a pull down list) of the MIDI files that are in the playlist. Clicking a MIDI name will jump to it (If Play was clicked, MMP will begin playing the MIDI). Clicking the same MIDI or the MIDI Marker/Filename Display will close the combo box.

The Time Display

The Time Display shows the MIDI's current play time, by the current time mode, Elapsed or Remaining. If time remaining is selected, a minus sign will show near the time display, to the left.

Current Song Display

The Current Song Display shows the current MIDI's number in the Play List.

Total MIDI's in Play List Display

Displays the Total number of MIDI's that are in the playlist.

Loop Mode Display

Displays the current Loop Mode:

Loop Whole Play List

Loop Current MIDI

Loop None

MIDI Position Bar

The MIDI Position Bar displays in presents the current position of the MIDI currently played.

Current MIDI Name

This shows the current selected MIDI's filename. When in Scan mode, the play sign will blink.

Next MIDI Name

This shows the next MIDI that will be played filename. When in Scan mode, the Next sign will blink.

MIDI Length Display

This displays the current selected MIDI's length, in minutes.

Setup Button

Click the Setup Button to change directories and delay setting. See more in [Setup Dialog Box](#)

[Help Button](#)

Load this help file.

Copyright Notice Display

Displays the current selected MIDI copyright notice, if available. Also used for displaying MMP messages.

Scan Button

Toggles Scan mode. While in Scan mode, MMP will play each song in the playlist (from the current song) for 15 seconds, letting you hear each song briefly. While in Scan mode, the Play and Next signs will blink. Press the Scan button again or press the Stop button will exit Scan mode.

Shuffle Button

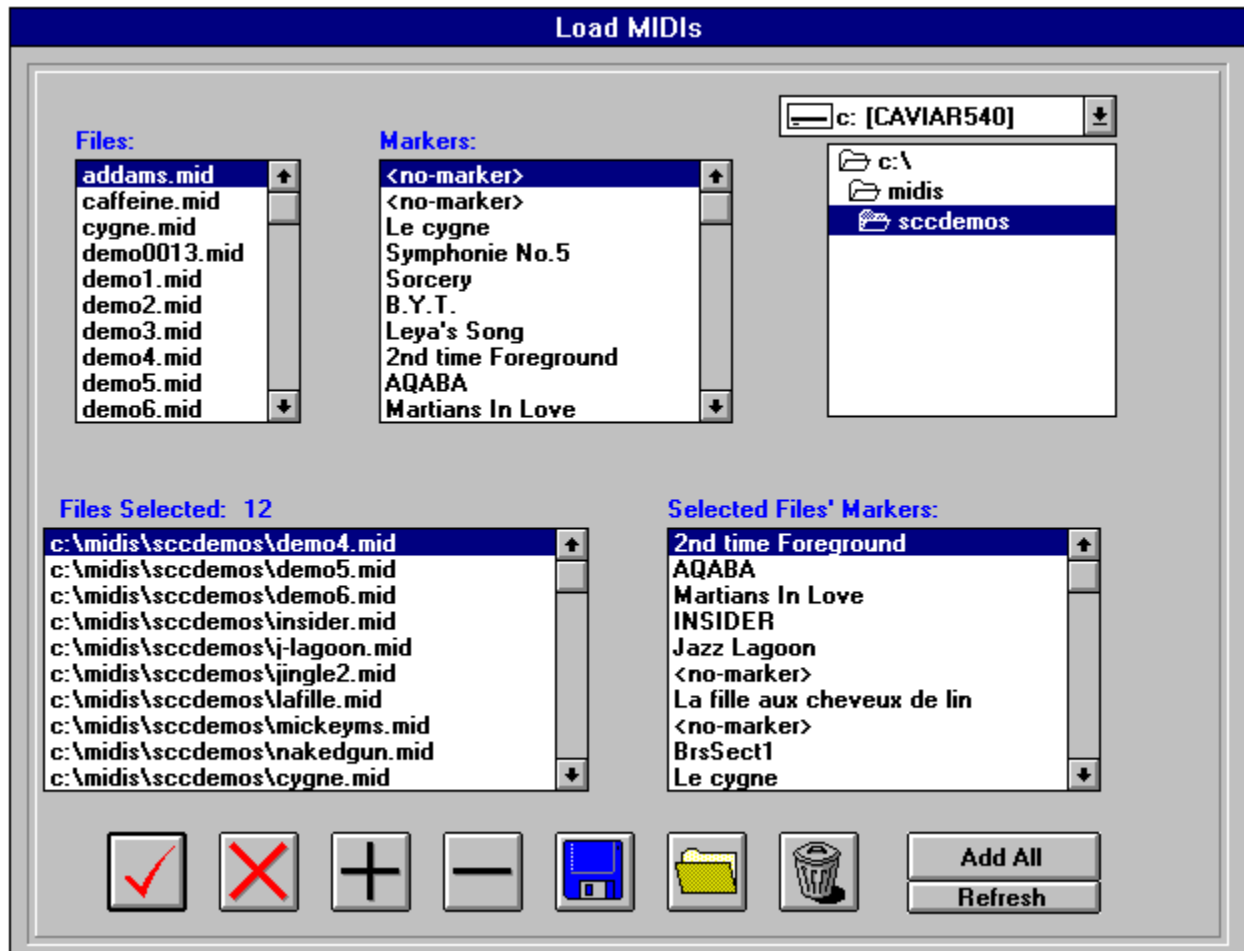
Toggles Shuffle mode. While in Shuffle mode, the Shuffle Mode Icon will highlight. The Shuffle mode shuffles the MIDIs which are in the playlist by random order, then playing them. If Loop List is on, when reaching the end of the list MMP will shuffle the list again, if not, the Shuffle mode will toggle off. To exit the Shuffle mode press the Shuffle Button again. Loading and QLoading while in Shuffle mode are not allowed.

Shuffle Display

When highlighted, Shuffle mode is on. Press the Shuffle Button to exit shuffle mode.

The Load Dialog Box

Click any part of the screen that you would like to know more about!



See Also:

[The Main Display](#)
[Setup Dialog Box](#)

Files and Markers Box

The File and Markers Box displays the MIDIs which exist in the current selected directory. Mark files by clicking the left mouse button, dragging to select the files, and releasing. To add files either press the Add button (plus sign), or drag the selected files to the Selected Files box by holding the right mouse button.

Selected Files and Markers Box

The Selected File and Markers Box displays the MIDIs that the user added to the playlist. The right list box show the files full path and the left one the MIDIs markers. To remove MIDIs from the playlist, mark them by holding the left mouse button and dragging, then pressing the Remove button (minus sign) or the keyboards minus sign.

The Ok Button

Click the Ok button to accept the selected files, and return to the main display.

The Cancel Button

Click the Cancel button to return to the main display, without changing anything in the playlist.

The Save Button

Click the Save button to save the playlist files to a file, so that you can load them again later. Input the file name in the dialog box, then press Ok. The file will be saved with an MMP extension, and you will return to the main display.

The Load Button

Click the Load Button to load files from an MMP file to the playlist. Input the file name in the dialog box, then press Ok. The files will be added to the playlist, and you will return to the main display.

The Add (plus) Button

Click the Add button to add files that you selected from the current directory, to the playlist.

The Remove (minus) Button

Click the Remove button to remove files that you selected from the playlist.

The Add All Button

Click the Add All Button to add all the files that are in the current directory to the playlist.

The Refresh Button

Click the Refresh button to refresh to current directory files markers. This is necessary if youve loaded this dialog box before, and the current directorys files have been changed.

The Directory Box

Use the directory box to change directory.

The Drive Box

Use the drive box to change drive.

The Clear All Button

Click the Clear All button to remove all files from the playlist.

About Multi MIDI Player



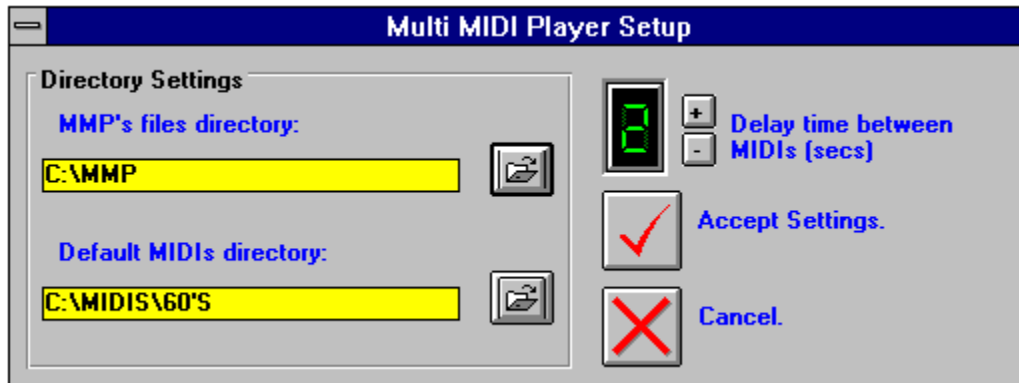
Version 1.00

**Created by Lior Barenboim
Concept and Design by Tal Barenboim**

Copyright 1995 by *BarSoft*

Multi MIDI Player Setup Dialog Box

Click on any part of the display that you would like to know more about!



See Also:

[The Main Display](#)
[Load Dialog Box](#)

Delay between MIDIs display

This display shows how much seconds MMP will delay after playing each MIDI in the playlist. Use the PLUS and MINUS button to increase or decrease the delay. The maximum delay allowed is 9 seconds.

The Plus Button

This button increases the delay MMP will delay after playing each MIDI in the playlist. The maximum delay allowed is 9 seconds.

The Minus Button

This button decreases the delay MMP will delay after playing each MIDI in the playlist. The minimum delay allowed is 0 seconds, meaning that MMP will not delay at all.

MMPs files directory display

This display shows in which directory MMPs files are located. It can be changed by clicking the Change MMPs Files Directory button.

Default MIDI's directory display

This display shows the default directory of MIDI's for loading, using the Load or the QLoad. It can be changed by clicking the Change MMPs Default MIDI's Directory button.

Change MMPs Files Directory button

Click this button to change the directory MMP will search for its files. To change it input the directory in the dialog box that will show, and press ok. The MMPs Files Directory display will change according to the directory you choosed.

Change MMPs Default MIDI's Directory

Click this button to change the directory MMP will use to load MIDI's as a default (will affect the directory the first time you use the Load or Qload commands) . To change it input the directory in the dialog box that will show, and press ok. The MMPs Default MIDI's Directory display will change according to the directory you choosed.

The Ok Button

Click this button to save the setting the you selected to the WIN.INI file (under Multi MIDI Player) and returning to the main display.

The Cancel Button

Click this button to return to the main display without saving or changing anything in MMPs setting.

